



CALIFORNIA


California is a voile on double width made of thin fine threads in the flame-retardant material Trevira CS. With 6 different warp colors and a variety of colours in the weft, the collection has an extensive and unique colour scale providing a shifting effect.

California works excellently in large windows or glass sections where the need for slight shielding exists and works well on a wave system or with a sewing slip.

Fits well in combination with our dense fabrics in Trevira CS or Polyester FR such as Nora, Ancona and Bottero but also as a contrasting light curtain to our fabrics in natural materials such as Varese, Savona and Aruba Mano Morbida.

This fabric is suitable when fire safety, ease of care and colour durability are priorities.

Please be aware that screen colours, printer colours and fabric dye batches may vary.

ARTICLE:	California
BINDING:	Plain weave
DYEING:	Yarn dyed
NUMBER OF COLOURS:	45
COMPOSITION:	100% Trevira CS
FINISH	Soft wash
WIDTH:	300 cm
WEIGHT:	70 gr/m2
SHRINKAGE AFTER WASHING:	Warp 1% Weft 1,5%
COLOUR FASTNESS TO ARTIFICIAL LIGHT:	5-6
COLOUR FASTNESS TO WASHING:	4-5
FLAME RETARDANT:	Yes
ENVIRONMENT:	Produced in Italy. Complies with REACH regulation and Oeko tex.
CARE:	

Technical specifications are subject to change without prior notice, updated results are available on www.astrid.se

CALIFORNIA



1150



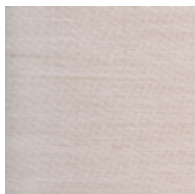
1520



2320



2227



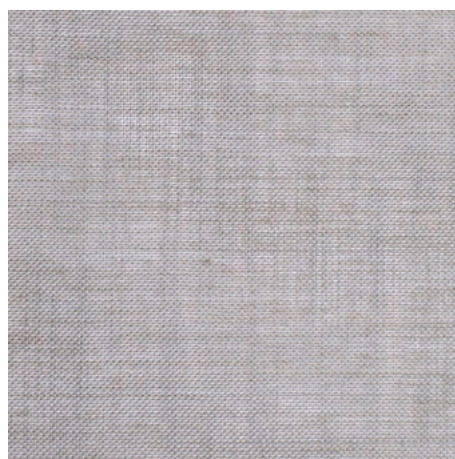
3243



3952



9131



1:1



3123



3340



2924



7571



7791



4433



4230



4921



7522



4345



4399



5342



5382

CALIFORNIA



5250



5530



5350



5166



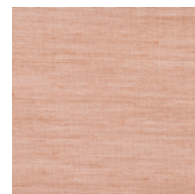
6321



6326



6327



6339



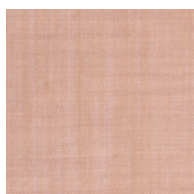
3653



3860



3895



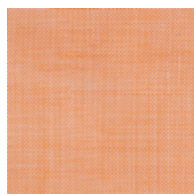
8166



8512



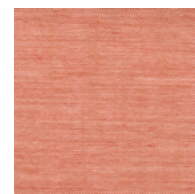
8861



6353



6559



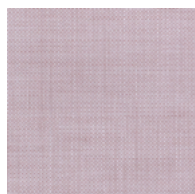
6885



6680



6814



8616



6776



6884



6922