



## CALIFORNIA

California is a voile on double width made of thin fine threads in the flame-retardant material Trevira CS. With 6 different warp colors and a variety of colours in the weft, the collection has an extensive and unique colour scale providing a shifting effect.

California works excellently in large windows or glass sections where the need for slight shielding exists and works well on a wave system or with a sewing slip.

The yarns may be uneven due to the spinning process and lies within the properties of the fabric. This is more visual in darker colours.

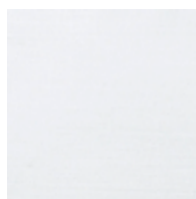
This fabric is suitable when fire safety, ease of care and colour durability are priorities.

Please be aware that screen colours, printer colours and fabric dye batches may vary.

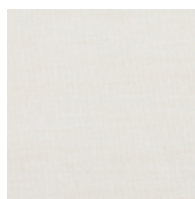
ARTICLE:	California
BINDING:	Plain weave
DYEING:	Yarn dyed
MAIN USE:	Curtain
NUMBER OF COLOURS:	45
COMPOSITION:	100% Trevira CS
WIDTH:	300 cm
WEIGHT:	70 gr/m2
SHRINKAGE AFTER WASHING:	Warp 1% Weft 1,5%
COLOUR FASTNESS TO ARTIFICIAL LIGHT:	5-6
COLOUR FASTNESS TO WASHING:	4-5
FLAME RETARDANT:	Yes. EN 13733, NFPA 701
ENVIRONMENT:	Produced in Italy.
	OEKO-TEX® STANDARD 100 2025OK1106 Aitex
CARE:	
ISSUED:	2025-05-06



Technical specifications are subject to change without prior notice, updated results are available on [www.astrid.se](http://www.astrid.se)



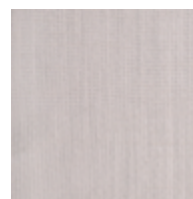
1150



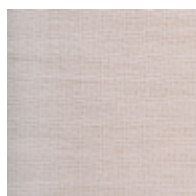
1520



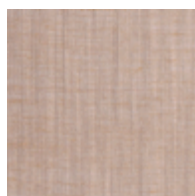
2320



2227



3243



3952



9131



1:1



3123



3340



2924



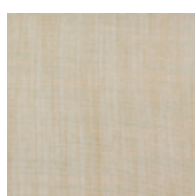
7571



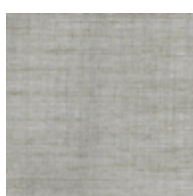
7791



4433



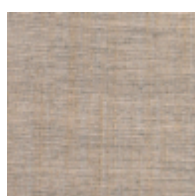
4230



4921



7522



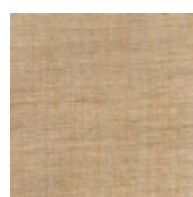
4345



4399



5342



5382



5250



5530



5350



5166



6321



6326



6327



6339



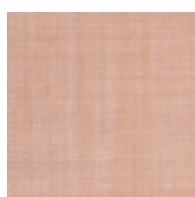
3653



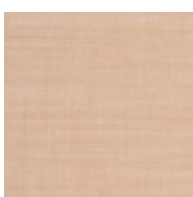
3860



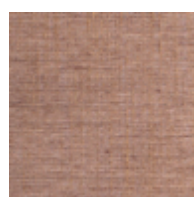
3895



8166



8512



8861



6353



6559



6885



6680



6814



8616



6776



6884



6922