









## FRESIA

The weave in Fresia is loose and the threads are somewhat thicker and softly spun, which creates a slightly thick, soft yet transparent fabric. It lets the light through beautifully, giving texture to the room.

Fresia may stretch depending the character of the fiber. This fabrics varies between dye batches, we will send a cut for approval (CFA).

Please be aware that screen colours, printer colours and fabric dye batches may vary.

ARTICLE:	Fresia
BINDING:	Plain weave
DYEING:	Piece dyed
MAIN USE:	Curtain
NUMBER OF COLOURS:	14
COMPOSITION:	40% Linen 30% VI 30% PL
FINISH:	Soft wash
WIDTH:	305-310 cm
WEIGHT:	213 gr/m2
SHRINKAGE AFTER WASHING:	Warp 2,5% Weft 3%
COLOUR FASTNESS TO ARTIFICIAL LIGHT:	<4
FLAME RETARDANT:	No
ENVIRONMENT:	Produced in Italy. Complies with REACH regulation.
CARE:	     

Technical specifications are subject to change without prior notice, updated results are available on [www.astrid.se](http://www.astrid.se)

## FRESIA

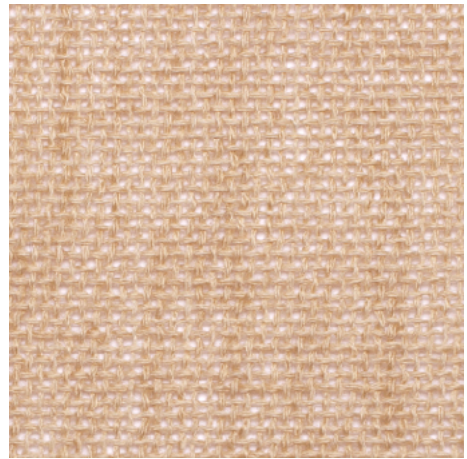
\* Discontinued colour still in stock



1510



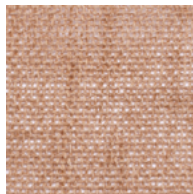
3135



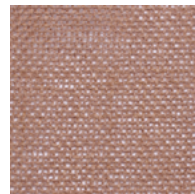
1:1



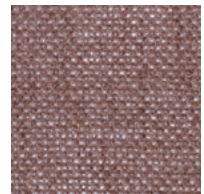
6333



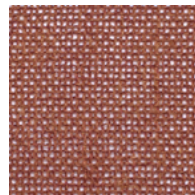
6326



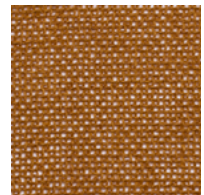
6122



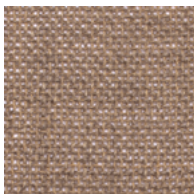
8632



6885



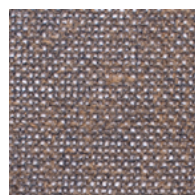
5860



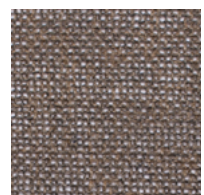
8132



8540



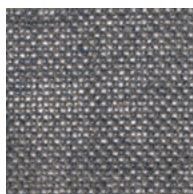
7883



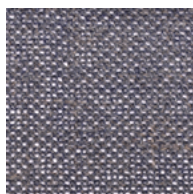
4840



7312



7529



7993\*