



GRASSE MANO MORBIDA

Grasse Mano Morbida is a dense textile on 340 cm width in the flame-retardant material Trevira CS which has a matte surface and a finishing wash that we call Mano Morbida which means soft hand in Italian and gives the fabric a beautiful drape.

The neutral colour scheme is matched in colour with the more transparent fabric Nizza Mano Morbida. Shades well when in need of sun protection and privacy.

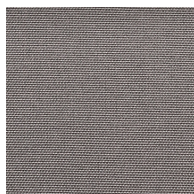
This fabric is suitable when fire safety, ease of care and colour durability are priorities.

Please be aware that screen colours, printer colours and fabric dye batches may vary.

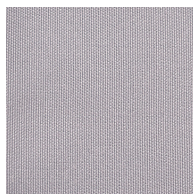
ARTICLE:	Grasse Mano Morbida
BINDING:	Plain weave
DYEING:	Piece dyed
MAIN USE:	Curtain
NUMBER OF COLOURS:	9
COMPOSITION:	100% Trevira CS
FINISH:	Soft wash
WIDTH:	340 cm
WEIGHT:	280 gr/m ²
SHRINKAGE AFTER WASHING:	Warp 2,5% weft 0,5%
COLOUR FASTNESS TO ARTIFICIAL LIGHT:	5-6
COLOUR FASTNESS TO WASHING:	4-5
FLAME RETARDANT:	Yes
SOUND ABSORPTION:	ISO 354:2003 = 0,60 / Class C
ENVIRONMENT:	Produced in Italy. Complies with REACH regulation.
CARE:	

Technical specifications are subject to change without prior notice, updated results are available on www.astrid.se

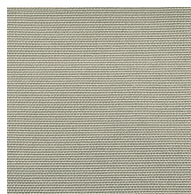
GRASSE MANO MORBIDA



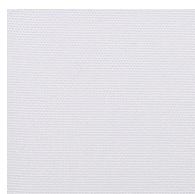
9229



2712



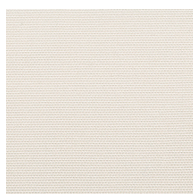
4240



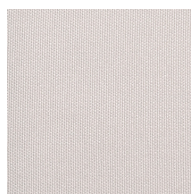
1110



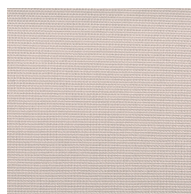
1155



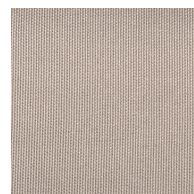
1550



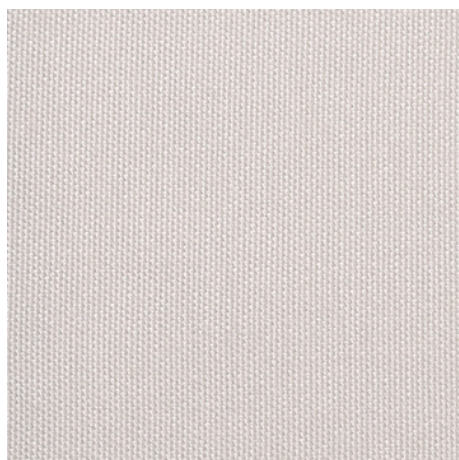
2130



3316



3281



1:1