




KIWI

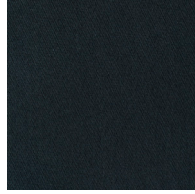
Kiwi is a shiny satin with a straight and heavy drape, close cousin to our Bottero, woven with the same yarns but in a satin binding.

This fabric is suitable when fire safety, ease of care and colour durability are priorities.

Please be aware that screen colours, printer colours and fabric dye batches may vary.

| | |
|--------------------------------------|--|
| ARTICLE: | Kiwi |
| BINDING: | Satin |
| DYEING: | Piece dyed |
| MAIN USE: | Curtain, decoration |
| NUMBER OF COLOURS: | 72 |
| COMPOSITION: | 51% Trevira CS 49% Polyester |
| WIDTH: | 300 cm |
| WEIGHT: | 277 gr/m ² |
| SHRINKAGE AFTER WASHING: | Warp 1,5% Weft 0,5% |
| COLOUR FASTNESS TO ARTIFICIAL LIGHT: | 5 |
| COLOUR FASTNESS TO WASHING: | 4-5 |
| FLAME RETARDANT: | Yes |
| SOUND ABSORPTION: | ISO 11564: 0,60 / Class C |
| ENVIRONMENT: | Produced in Italy. Complies with REACH and Oeko-Tex. |
| CARE: |  |
| SPECIAL NOTE: | Wash in lower temperature if possible. |

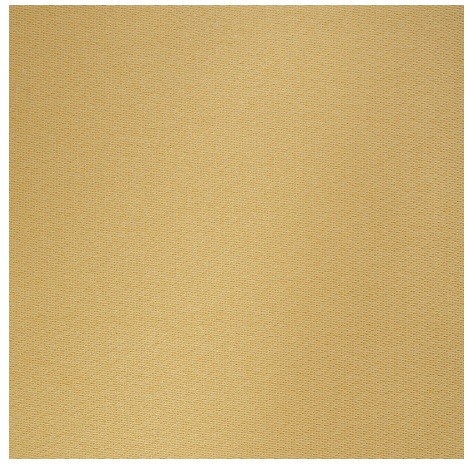
Technical specifications are subject to change without prior notice, updated results are available on www.astrid.se



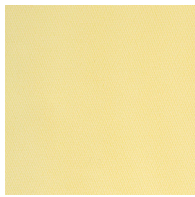
9990



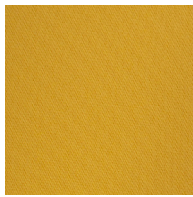
8160



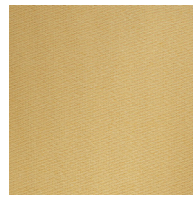
1:1



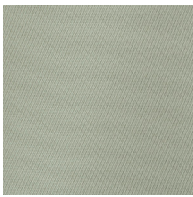
5510



5592



5350



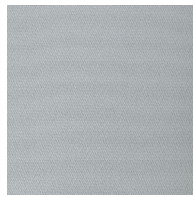
4240



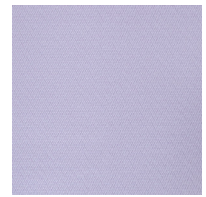
7320



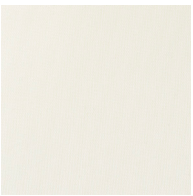
7273



2772



7610



1550



3550



3850



3855



3820



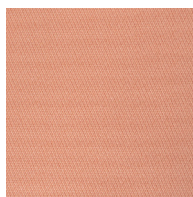
6889



6559



6550



6359



6302