




NIZZA MANO MORBIDA

Nizza Mano Morbida is an extra wide semitransparent fabric in Trevira CS with a matte and smooth surface. It's a very soft and supple fabric with a beautiful drape. The fabric will filter the light beautifully and make a calm background in the room. The colours scheme of Nizza has earthy and natural tones. If you wish to match with a dense and heavier fabric we have Grasse Mano Morbida in the same colours.

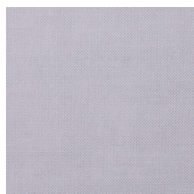
This fabric is suitable when fire safety, ease of care and colour durability are priorities.

Please be aware that screen colours, printer colours and fabric dye batches may vary.

ARTICLE:	Nizza Mano Morbida
DYEING:	Piece dyed
MAIN USE:	Curtain
NUMBER OF COLOURS:	9
COMPOSITION:	100% Trevira CS
FINISH	Soft wash
WIDTH:	325 cm
WEIGHT:	103 gr/m2
SHRINKAGE AFTER WASHING:	Warp 2% Weft 1%
COLOUR FASTNESS TO ARTIFICIAL LIGHT:	5-6
COLOUR FASTNESS TO WASHING:	4-5
FLAME RETARDANT:	Yes
ENVIRONMENT:	Produced in Italy. Complies with REACH and Oeko-Tex.
CARE:	
SPECIAL NOTE:	Wash in lower temperature if possible

Technical specifications are subject to change without prior notice, updated results are available on www.astrid.se

NIZZA MANO MORBIDA



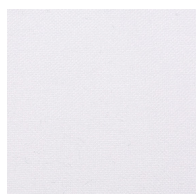
2712



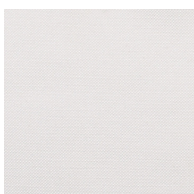
9229



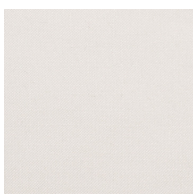
4240



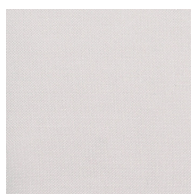
1110



1155



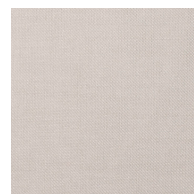
1550



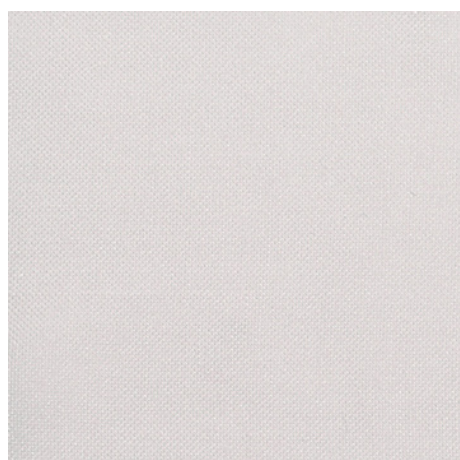
2130



3281



3316



1:1