




RIVOLI

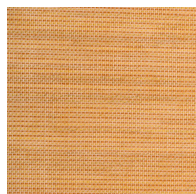
Rivoli is an extra wide semi transparent textile with a natural touch, much due to its multicoloured threads. It has great draping skills and a soft and beautiful lustre.

This fabric is suitable when fire safety, ease of care and colour durability are priorities.

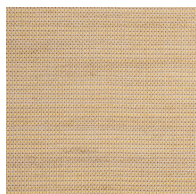
Please be aware that screen colours, printer colours and fabric dye batches may vary.

| | |
|--------------------------------------|--------------------------------------------------------------------------------------|
| ARTICLE: | Rivoli |
| DYEING: | Yarn dyed |
| MAIN USE: | Curtain |
| NUMBER OF COLOURS: | 23 |
| COMPOSITION: | 100% Trevira CS |
| FINISH | Soft wash |
| WIDTH: | 330 cm |
| WEIGHT: | 127 gr/m2 |
| SHRINKAGE AFTER WASHING: | Warp 1,5% Weft 1% |
| COLOUR FASTNESS TO ARTIFICIAL LIGHT: | 5-6 |
| COLOUR FASTNESS TO WASHING: | 4-5 |
| FLAME RETARDANT: | Yes |
| ENVIRONMENT: | Produced in Italy. Complies with REACH and Oeko-Tex. |
| CARE: |  |
| SPECIAL NOTE: | Wash in lower temperature if possible |

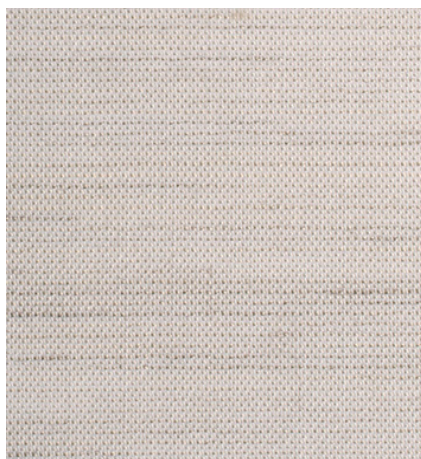
Technical specifications are subject to change without prior notice, updated results are available on www.astrid.se



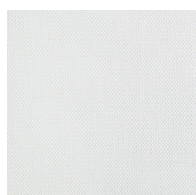
5356



5322



1:1



1155



2132



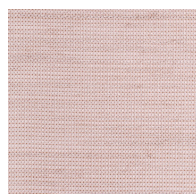
3123



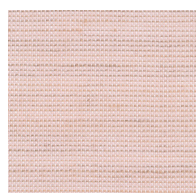
3132



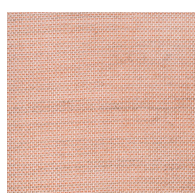
3566



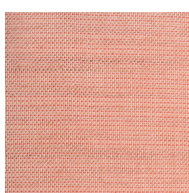
6023



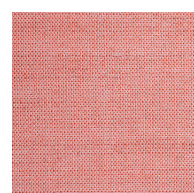
6336



6339



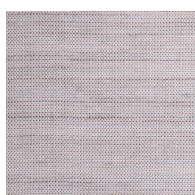
6351



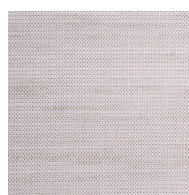
6363



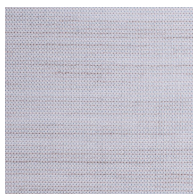
2280



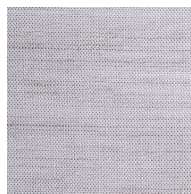
2861



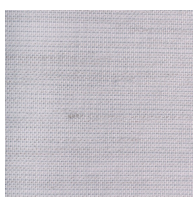
2881



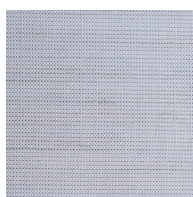
2178



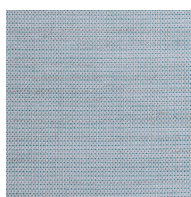
2788



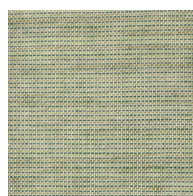
2277



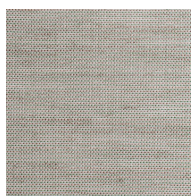
7290



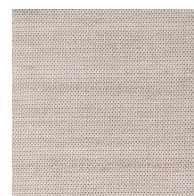
7340



4732



4230



3244