



SAVONA

Savona is a smooth linen fabric of double width with a finishing soft wash that gives the fabric a heavy and beautiful drape. The threads in warp and weft have different colours, which gives a nice depth.

This fabric may stretch depending on the natural character of the fiber. Yarns may be uneven with knots and slobbs depending on the natural properties of the fiber.

For best result use the width of the fabric as the width of the curtain.

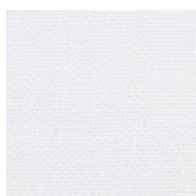
Please be aware that screen colours, printer colours and fabric dye batches may vary.

ARTICLE:	Savona
BINDING:	Plain weave
DYEING:	Yarn dyed
MAIN USE:	Curtain, decoration
NUMBER OF COLOURS:	15
COMPOSITION:	100 % Linen
FINISH:	Soft wash
WIDTH:	290-300 cm
WEIGHT:	193 gr/m ²
SHRINKAGE AFTER WASHING:	+/- 2%
COLOUR FASTNESS TO ARTIFICIAL LIGHT:	4/5
COLOUR FASTNESS TO WASHING:	4/5
FLAME RETARDANT:	No
ENVIRONMENT:	Produced in Italy. Complies with REACH regulation and
CARE:	Oeko-Tex.



Technical specifications are subject to change without prior notice, updated results are available on www.astrid.se

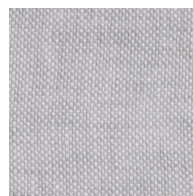
SAVONA



1155



3132



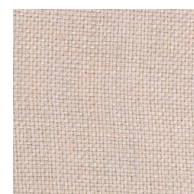
2231



4133



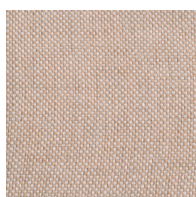
3243



3356



5240



3826



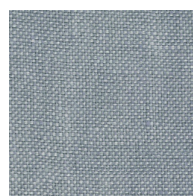
6333



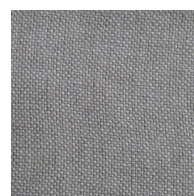
6023



4233



4272



4292



1:1



2779



7313