



PONZA

Ponza is an upholstery fabric with a slightly coarser structure. The surface of the fabric has a fine gloss of linen and is slightly mottled, which is due to the high percentage of polyamide which also makes the fabric very durable.

The linen yarn can be irregular with slob and knots depending on the natural character of the linen fiber.

It will stretch and/or contract depending on humidity, dryness and temperature.

Please be aware that screen colours, printer colours and fabric dye batches may all vary.

ARTICLE:	Ponza
BINDING:	Plain weave
DYEING:	Piece dyed
MAIN USE:	Upholstery, decoration
NUMBER OF COLOURS:	11
COMPOSITION:	65% Linen 35% Polyamid
WIDTH:	140 cm
WEIGHT:	525 gr/m ²
MARTINDALE:	100.000
PILLING:	4
SHRINKAGE AFTER WASHING:	3%
COLOUR FASTNESS TO ARTIFICIAL LIGHT:	5
COLOUR FASTNESS TO WASHING:	4
FLAME RETARDANT:	No
ENVIRONMENT:	Produced in Belgium.
	OEKO-TEX® STANDARD 100 2025OK1106 Aitex
CARE:	
ISSUED:	2026-03-25



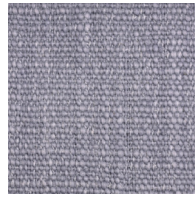
Technical specifications are subject to change without prior notice, updated results are available on www.astrid.se



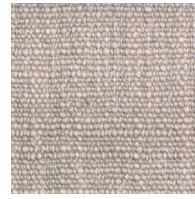
1152



1550



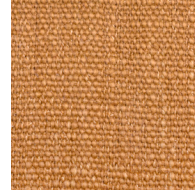
2970



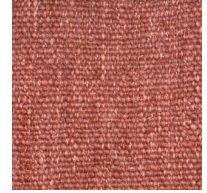
3220



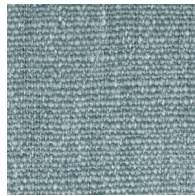
4395



5861



6885



7541



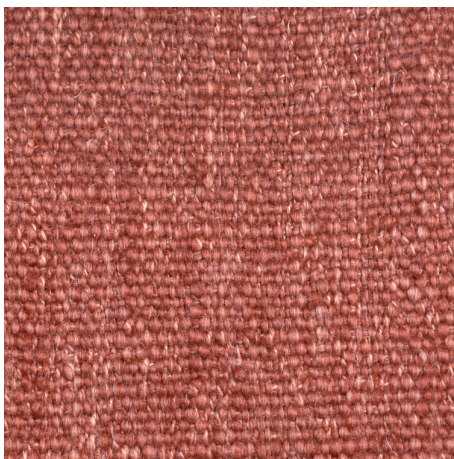
7794



7997



8190



1:1