






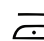


LUNA DIMOUT RECYCLED

Luna is made of 60% recycled polyester FR GRS and 40% polyester FR. It's a flame-retardent dimout fabric in double width. The fabric is double woven with a black thread in the middle which gives the fabric its darkening properties. It has a soft drape with a smooth satin-like surface.

Fabrics with a dimout effect darkens the room and are most often used in bedrooms. Our dimout fabrics can be used as a curtain on its own or as a luxurious lining. Darker colours dims the most.

Use the fabric's width as the curtain's width for the best drape and to avoid a visible folding mark.

Please be aware that screen colours, printer colours and fabric dye batches may vary.

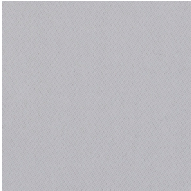
ARTICLE:	Luna Dimout Recycled
BINDING:	Double sided satin
DYEING:	Piece dyed
MAIN USE:	Curtain
NUMBER OF COLOURS:	22
COMPOSITION:	60% Recycled Polyester FR GRS 40% Polyester FR
WIDTH:	295-300 cm
WEIGHT:	234 gr/m2
SHRINKAGE AFTER WASHING:	Warp 0,6% Weft 0,3%
COLOUR FASTNESS TO ARTIFICIAL LIGHT:	4
COLOUR FASTNESS TO WASHING:	4/5
FLAME RETARDANT:	Yes. DIN 4102 - B1
SOUND ABSORPTION:	ISO 354:2003 = 0,8 / Class B (waved curtain)
ENVIRONMENT:	Produced in Turkey. Complies with REACH regulation and Oeko-tex.
CARE:	     

Technical specifications are subject to change without prior notice, updated results are available on www.astrid.se

LUNA DIMOUT RECYCLED



2077



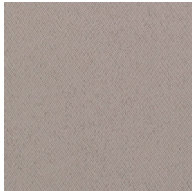
2237



2330



3615



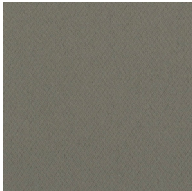
3629



4791



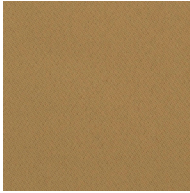
4230



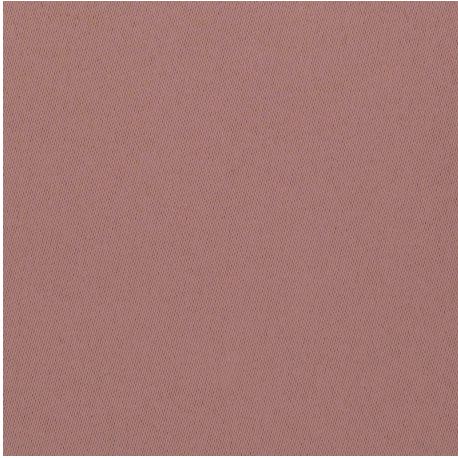
4393



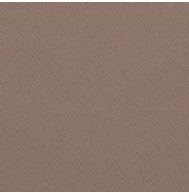
4832



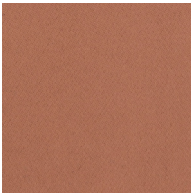
5350



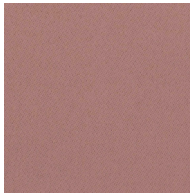
1:1



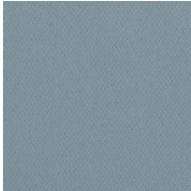
8163



6356



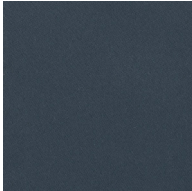
6351



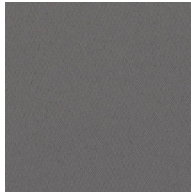
7543



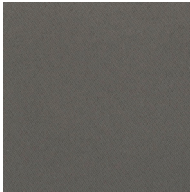
7729



7792



8442



8448



8879



8892



2927



9920