

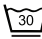






ETNA

Etna is a sheer linen fabric with a wavy structure, the warp and weft have slightly different colours, which gives a varying tone and a depth to the fabric, the coloured yarn is more visible on the front side. It's on double-width, is soft and pliable with a wonderful soft drape.

This fabric will stretch and/or contract depending on humidity, dryness and the natural character of the linen fiber.

Please be aware that screen colours, printer colours and fabric dye batches may vary.

ARTICLE:	Etna
BINDING:	Plain weave
DYEING:	Yarn dyed
MAIN USE:	Curtain
NUMBER OF COLOURS:	3
COMPOSITION:	100 % linen
FINISH:	Washed and tumbled
WIDTH:	330 cm
WEIGHT:	130 gr/m2
SHRINKAGE AFTER WASHING:	2%
COLOUR FASTNESS TO ARTIFICIAL LIGHT:	4
COLOUR FASTNESS TO WASHING:	4
FLAME RETARDANT:	No
ENVIRONMENT:	Produced in Spain. Complies with REACH regulation and Oeko-Tex.
CARE:	     Iron while damp.

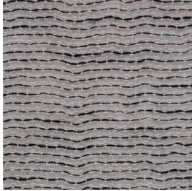
Technical specifications are subject to change without prior notice, updated results are available on www.astrid.se



1229



3556



9130



1:1