




NORA

Nora is a dense wool-like satin on double width in the flameproof material Trevira CS. The fabric has a matte surface, when spotlighted some elegant highlights appear and it has a beautiful drape. The weft is slightly mottled in some colours that give a nice effect and other colours are completely even. The satin binding and the colour of the warp means that Nora has a different colour and structure on the back.

For best result use the width of the fabric as the width of the curtain.

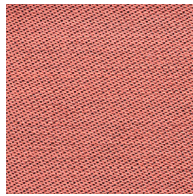
This fabric is suitable when fire safety, ease of care and colour durability are priorities.

Please be aware that screen colours, printer colours and fabric dye batches may vary.

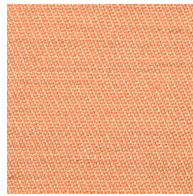
| | |
|--------------------------------------|--|
| ARTICLE: | Nora |
| BINDING: | Satin |
| DYEING: | Yarn dyed |
| MAIN USE: | Curtain |
| NUMBER OF COLOURS: | 30 |
| COMPOSITION: | 61% Trevira CS 39% Polyester |
| WIDTH: | 300 cm |
| WEIGHT: | 173 gr/m2 |
| SHRINKAGE AFTER WASHING: | Warp 1% Weft 1,5% |
| COLOUR FASTNESS TO ARTIFICIAL LIGHT: | >5 |
| COLOUR FASTNESS TO WASHING: | 4-5 |
| FLAME RETARDANT: | Yes |
| SOUND ABSORPTION: | ISO 354:2003 = 0,55 / Class D |
| ENVIRONMENT: | Produced in Italy. Complies with REACH and Oeko-tex. |
| CARE: |  |

Technical specifications are subject to change without prior notice, updated results are available on www.astrid.se

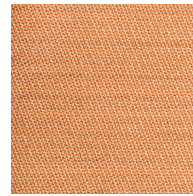
NORA



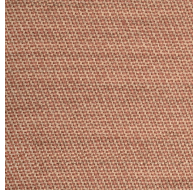
6369



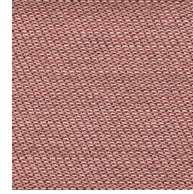
6353



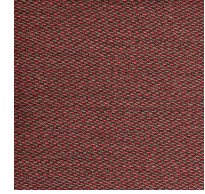
3861



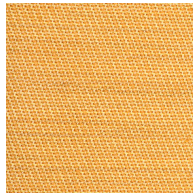
8166



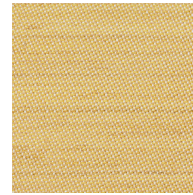
8630



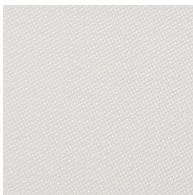
6998



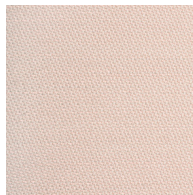
5356



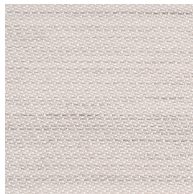
5230



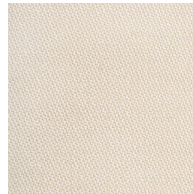
1155



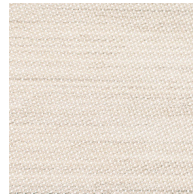
1635



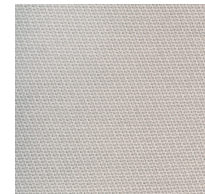
3123



3133



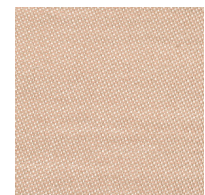
3132



3213



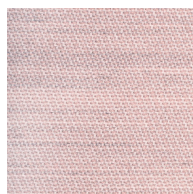
3563



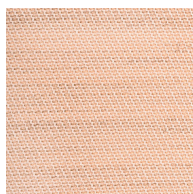
3661



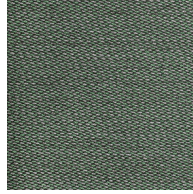
6025



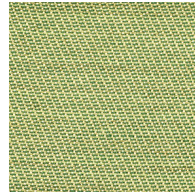
6023



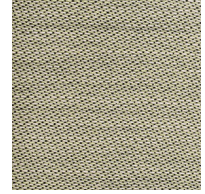
6331



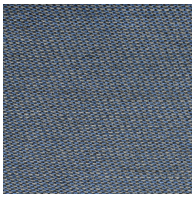
4979



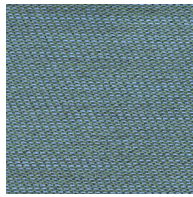
4483



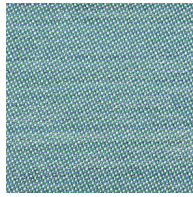
4239



7999



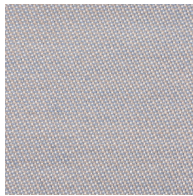
7494



4774



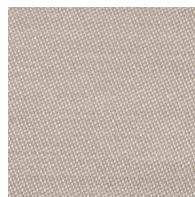
2788



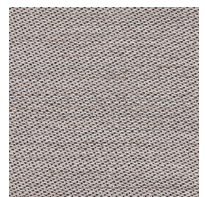
2777



1:1



2982



9229