



ARUBA MANO MORBIDA

Aruba Mano Morbida is a washed linen/silk in a satin binding. It is washed to give it a unique look, it has soft small wrinkles and marks. The linen yarn can be irregular with slobes and knots depending on the natural character of the linen fiber. This may be visible on the shiny silk side and is normal and in reference with the properties of this fabric.

It may stretch and/or contract depending on humidity, dryness and temperature.

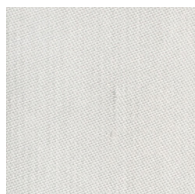
For best result use the width of the fabric as the width of the curtain.

Please be aware that screen colours, printer colours and fabric dye batches may vary.

ARTICLE:	Aruba Mano Morbida
BINDING:	Satin
DYEING:	Yarn dyed
MAIN USE:	Curtain
NUMBER OF COLOURS:	10
COMPOSITION:	70% Linen 30% Silk
FINISH:	Soft wash
WIDTH:	300 cm
WEIGHT:	137 gr/m ²
SHRINKAGE AFTER WASHING:	Warp 1% Weft 1,5%
COLOUR FASTNESS TO ARTIFICIAL LIGHT:	4/5
COLOUR FASTNESS TO WASHING:	4
FLAME RETARDANT:	No
ENVIRONMENT:	Produced in Italy. Complies with REACH regulation.
CARE:	    
NOTE:	When washing use a professional laundry service.

Technical specifications are subject to change without prior notice, updated results are available on www.astrid.se

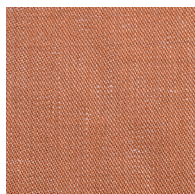
ARUBA MANO MORBIDA



1151



6220



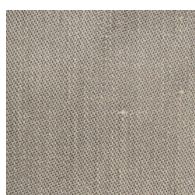
6883



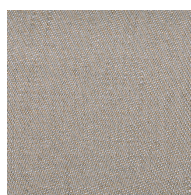
1:1



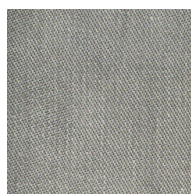
1520



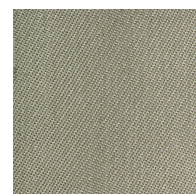
2869



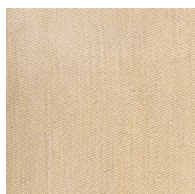
3980



4224



4325



5310



3552