

astrid



DOROTEA

This soft and beautiful twill textile is produced from leftover wool fibers and linen. Great for throws, and will make a soft and elegant curtain.

This fabric will stretch and/or contract depending on humidity, dryness and temperature.

Please be aware that screen colours, printer colours and fabric dye batches may vary.

ARTICLE:	Dorotea
BINDING:	Twill
DYEING:	Yarn dyed
MAIN USE:	Curtain, decoration
NUMBER OF COLOURS:	3
COMPOSITION:	66% Wool produced by leftover fibers 34% Linen
FINISH:	Soft wash
WIDTH:	290-300 cm
WEIGHT:	160 gr/m ²
SHRINKAGE AFTER WASHING:	Warp 1,5% Weft +/- 2,5%
COLOUR FASTNESS TO ARTIFICIAL LIGHT:	3/4
COLOUR FASTNESS TO WASHING:	4/5
FLAME RETARDANT:	No
ENVIRONMENT:	Produced in Italy with wool produced by leftover fibers. Complies with REACH regulation.
CARE:	
NOTE:	When washing use a professional laundry service.

Technical specifications are subject to change without prior notice, updated results are available on www.astrid.se

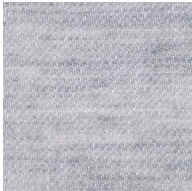
NYBROGATAN 68, SE-114 41 STOCKHOLM
TEL +46 8 667 15 33 - info@astrid.se - www.astrid.se

2024-05

DOROTEA



1555



2279



3213



1:1