

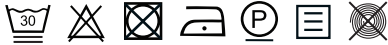


## LUCIA

Lucia is a fantastic soft wool fabric on double width with a netlike structure and airy feel. It drapes beautifully and can with advantage puddle the floor. It contributes to a warm and cozy atmosphere. Lucia is part of our series "Wool Collection" together with Chiara, Lorenzo, Paolo and Valle, all of which are made in the finest "Virgin Wool" quality, which means that the wool's good properties are preserved.

Use the width of the fabric as the width of the curtain for best results. This article may grow depending on the natural nature of the wool fiber.

Please be aware that screen colours, printer colours and fabric dye batches may vary.

|                                      |  |
|--------------------------------------|--|
| ARTICLE:                             | Lucia  |
| BINDING:                             | Plain weave  |
| DYEING:                              | Yarn dyed  |
| MAIN USE:                            | Curtain, decoration  |
| NUMBER OF COLOURS:                   | 69 % WV 20% WM 11% Silk  |
| COMPOSITION:                         | 3  |
| WIDTH:                               | 300–310 cm   |
| WEIGHT:                              | 145 gr/m2  |
| SHRINKAGE AFTER WASHING:             | Warp: 1,5% Weft: 2%  |
| COLOUR FASTNESS TO ARTIFICIAL LIGHT: | 4/5  |
| COLOUR FASTNESS TO WASHING:          | 4  |
| FLAME RETARDANT:                     | No   |
| ENVIRONMENT:                         | Produced in Italy with muelsing free wool. Complies with REACH regualtion.           |
| CARE:                                |  |
| NOTE:                                | When washing use a professional laundry service.                                     |

Technical specifications are subject to change without prior notice, updated results are available on [www.astrid.se](http://www.astrid.se)

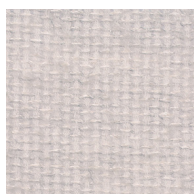
LUCIA



1:1



1510



2163



3611